

MAKE THE CLIMATE DIAGRAM

A **climate diagram** is a graph that reflects the climate in a place.

Using the following data, draw your own climate diagram for Ubrique.

Instructions:

First draw the months on the **horizontal line**. Use a scale so that 5 mm represents 1 month.

Then draw two vertical lines:

- put temperature on **the right line** and make 1 cm represents 10°C.
- put precipitation on **the left line** and make 1 cm represents 20 mm rainfall.

Mark on the temperature data and connect the data together with one **red line**.

Mark on the precipitation data and draw 12 separated **blue columns**.

Ubrique	Jan	Feb	Mar	Apr	May	Jun	Jul	Aug	Sept	Oct	Nov	Dec
T °C	9	10	11	14	22	28	34	32	25	17	13	9
P mm	48	47	67	57	43	17	3	5	76	96	61	53

Arid months are months when the temperature line is higher than the precipitation line. These months are dry.

Humid months are months when the precipitation line is higher than the temperature line.

INTERPRETATION OF THE CLIMATE DIAGRAM

1. What is the average temperature in the hottest month?
2. What is the average temperature in the coldest month?
3. Are there large or small contrasts of temperature?
4. How do you classify this climate according to the temperatures, hot or cold?
5. Is it a place with abundant, medium or scarce rainfall?
6. How is the rainfall distributed through the year? What month or season are the most humid? And the driest month? Are there arid months?
7. Which types of climate do you think this climate diagram is? Where is it located in?
8. Which type of vegetation is the most common in this place?

Rainforests or jungles are near the equator in Central America, parts Africa and Asia. They are very hot and humid and contain a huge variety of plants and animals. It is typical of equatorial climate with abundant precipitations. I

Savannah or tropical grasslands are hot and dry, dominated by grass and occasional trees like acacias and baobabs. They have two different seasons, a dry season when much of the vegetation dies, and a rainy season when it grows rapidly. It is typical of the tropical climate it is between the jungle and the desert.

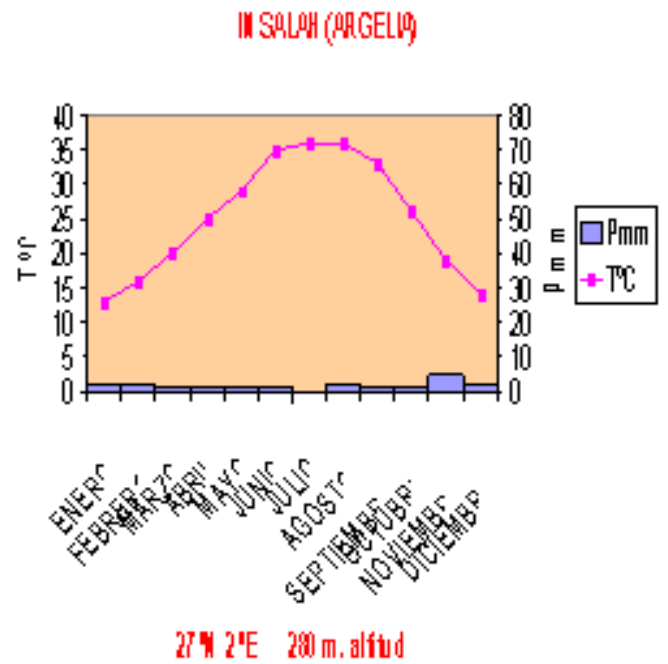
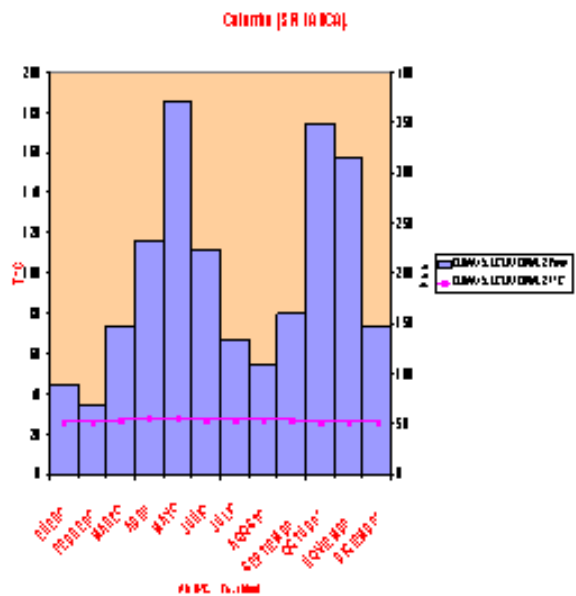
Desert is an arid zone, where vegetation is extremely poor and it grows in oases. There are only a few plants like cactus, palm and esparto grass. This vegetation is typical of desert climates.

Mediterranean forest is the typical vegetation of Mediterranean climate, which is characterised by temperate winters and hot, dry summers. A Mediterranean forest has evergreen trees.

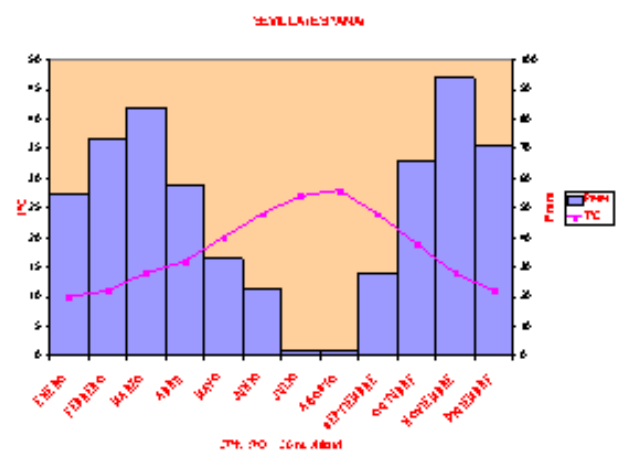
Atlantic forest is the typical vegetation of Oceanic climate, which has temperate temperatures and abundant precipitation all the year. An Atlantic forest has deciduous trees.

Taiga is the typical vegetation of Continental climate, which has very cold winters and very hot, humid summers. The taiga is made up of conifers.

NOW INTERPRETATE THE FOLLOWING CLIMATE DIAGRAMS:



2



37. 00 16m. altitud

DESCRIBING THE WEATHER

What's the weather like today?

Imagine someone ask you "What's the weather like today?". You will have to talk, at least, about these four elements: temperature, precipitation, state of the sky and winds.

1.TEMPERATURE.

From the lowest temperatures to the highest temperatures, you can use these adjectives:

freezing (below 0°C)<**cold**<**cool**<**temperate**=mild<**warm**<**hot**

2.PRECIPITATION.

Key-words: **rain**, storm, heavy rain, drizzle (=light rain), **snow**, sleet, hail.

3.STATE OF THE SKY

Key-words: sunny, sunshine, cloudy, **overcast**, **clear sky**.

4.WINDS.

From the gentle winds to the strongest winds you can distinguish:

calm<**breeze** (=gentle wind)<**moderate wind**<**strong wind**<**gale**.

Mapa interactivo de los climas del mundo y sus vegetaciones:

<http://www.bbc.co.uk/schools/gcsebitesize/geography/weather/globalclimaterev2.shtml>

- **Rainforests or jungles** are near the equator in Central America, parts Africa and Asia. They are very hot and humid and contain a huge variety of plants and animals.
- **Coniferous forests** contain pine trees are found further north than deciduous forests, in Scandinavia, Russia and Canada.
- **Desert** is the driest of areas. The largest expanse of desert is found in North Africa. Areas of scrubland that border the desert are called **desert scrub**.
- **Savannah** or tropical grasslands are hot and dry, dominated by grass and occasional trees. They have two distinct seasons, a dry season when much of the vegetation dies, and a rainy season when it grows rapidly. Savannah are found in central Africa (Kenya, Zambia, Tanzania), northern Australia and central South America (Venezuela and Brazil).
- **Temperate grasslands** are areas dominated by grass, where trees and large bushes are scarce. The weather is less harsh than the savannah. Famous grasslands include the Puszta in Hungary, Veldts in South Africa, Pampas in Argentina and Prairies in USA.

- **Mediterranean** is a pleasant climate - not too hot or cold. As the name suggests it is found around the Mediterranean Sea and to a lesser extent elsewhere.
- **Tundra** surrounds the poles. It has an extremely cold climate, with limited numbers of plants and animals.
- **Mountain** areas can be very cold at night and during winter. The growing season is short and at higher levels trees will not grow.